

# Mister-T1 Pretreat Cleaning Manual

## Set Your Pretreat Machine Angle

Ensure the T-1 is draining properly. Hose line should run straight down into a bucket, no kinks or loops.



Raise the front of the unit about the height of a print cartridge to encourage a steady gravity feed. Adjust the feet to hold the position.



**Follow this cleaning process at the end of every pretreat day**

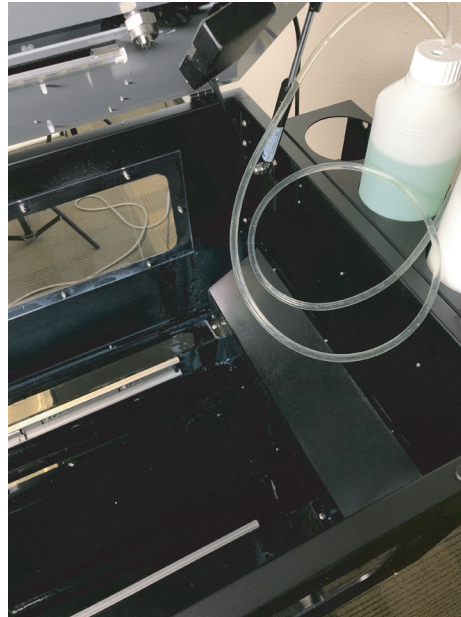
- 1. Mix hot tap water and about 1 oz of Simple Green to create a cleaning solution.**



- 2. Remove the blue filter from the intake line. This filter often clogs and is a reason for a poor spray pattern. Cut a T-shirt and wrap with rubber band instead. Remove and replace it if you notice buildup.**



- 3.** Remove intake line from pretreat bottle and insert into cleaning solution.
  - Open drawer.
  - Press cleaning button. Let run for a few seconds until solution is visible in the bottom of the pretreat machine.



- 4.** Leave drawer open and run round trip spray 3 or 4 times.
  - Notice the nozzle spray, is it good or bad?
  - Good spray continue to step **8**.

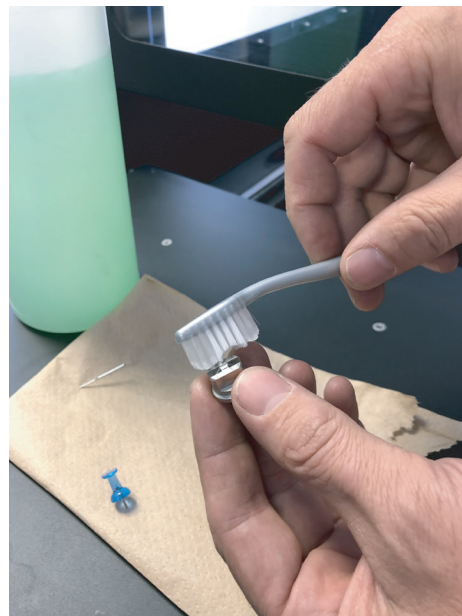


## 5. Bad spray pattern, remove the nozzle and clean.



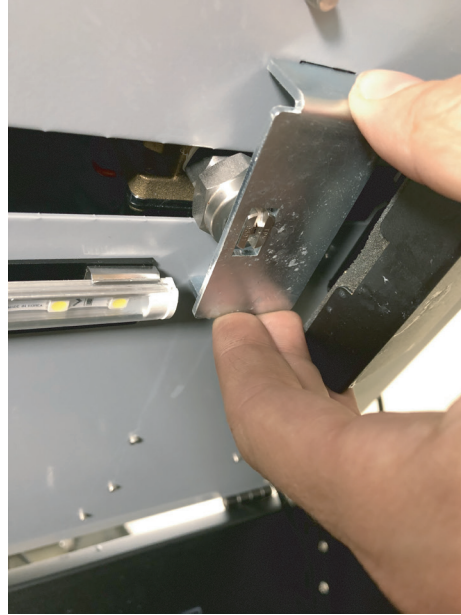
## 6. Clean the nozzle with a small sharp object and a toothbrush with cleaning solution.

- Be sure all buildup and debris is completely free. Any buildup or debris will effect the spray pattern.
- Buy extra nozzles at [shopmelco.com](http://shopmelco.com)  
PN 34924 Cotton - PN 35303 & 35304 Poly





- 7. Re-attach nozzle and use tool to ensure alignment is correct.**



- 8. Close tray and run another round trip. Assess the spray pattern on the platen.**
  - If pattern looks good, continue with the cleaning process.
  - If pattern looks poor, clean intake line filter, and double-check nozzle.

## 9. Wipe down the platen.

Open the lid and use a terry cloth towel to wipe down the whole inside of the machine. Open the drawer and wipe down all visible areas.



## 10. Once your unit is clean and has a good spray pattern, you can turn off until next use.

When you are ready to pretreat next, run a quick round trip spray on the platen with cleaning solution to check the pattern.

- If good, simply remove the intake line from the cleaning solution, insert into your pretreat bottle, and charge the line.
- If bad, and you are sure you cleaned it well at last shut down, run the Clean Button for a few seconds to let the pump warm up until you notice a good spray pattern.

**ADDITIONAL NOTES:**

- **To charge the line, open drawer and press the Clean Button until you see the line charge with pretreat and pool in the bottom tray.**
- **If at any point in the pretreat process you see a poor nozzle pattern, there are two main reasons.**
  1. **Your intake line filter is clogged.**
    - **Replace the T-shirt filter or clean blue filter.**
  2. **Your nozzle is clogged.**
    - **Remove nozzle and clean.**
- **If you have any issues beyond what cleaning will fix, you may have a hardware issue, which is covered under 1 year warranty.**
- **Call or email Joto for service :**  
**1-800-565-5686**  
**support@jotoimagingssupplies.com**
- **Always use distilled water to mix pretreat.**
- **Use "Round Trip 4" for black t shirts**  
**"Round Trip 5" for lighter shirts**  
**"Single Pass 4" (or 5) for white shirts**  
**White shirts do not require pretreat**