

<b>melco</b>	<b>INSTALLATION INSTRUCTIONS</b>	<b>MODELS</b>
	<b>LINEAR GUIDE UPGRADE FOR WIDE-ANGLE DRIVER</b>	<b>EMT16, SUMMIT, BRAVO, E16</b>

The purpose of this document is to provide step-by-step instructions for upgrading the Wide-Angle Cap Frame Driver to the Linear Guide system, part number 36037. To achieve this the following tools will be needed:

- Pliers
- Painter's tape
- 6mm wrench
- Permanent marker
- 4mm hex ball-end screwdriver (in Operator Kit provided with machine)

**UPGRADING THE WIDE-ANGLE DRIVER TO THE LINEAR GUIDE SYSTEM**

1. Using a permanent marker, mark the threaded portion of the left and right Cable Studs next to the Cable Locking Nut as shown in images below

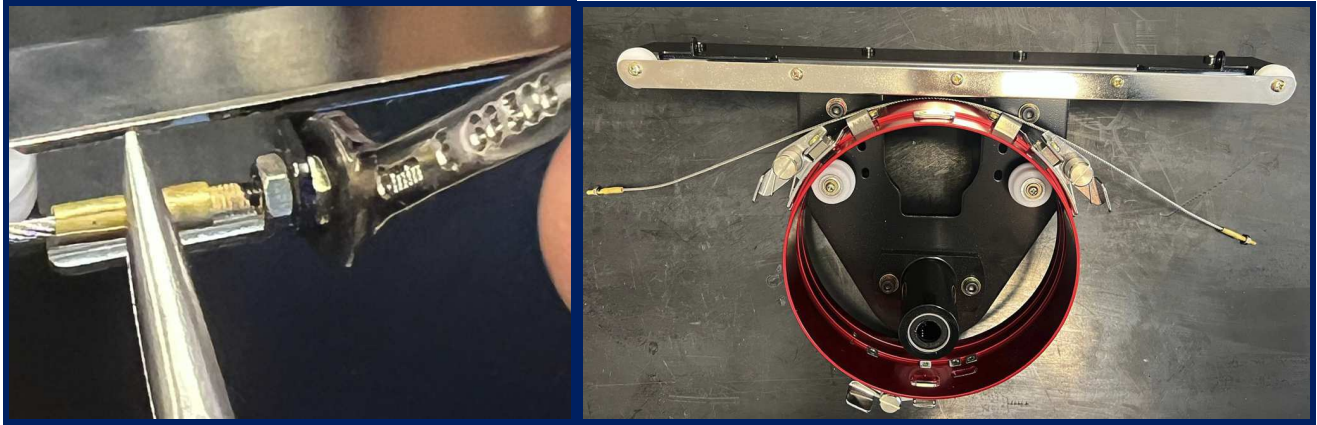


2. Place tape on the two opposite sides of the red Cylinder to prevent the Cable from unwinding.

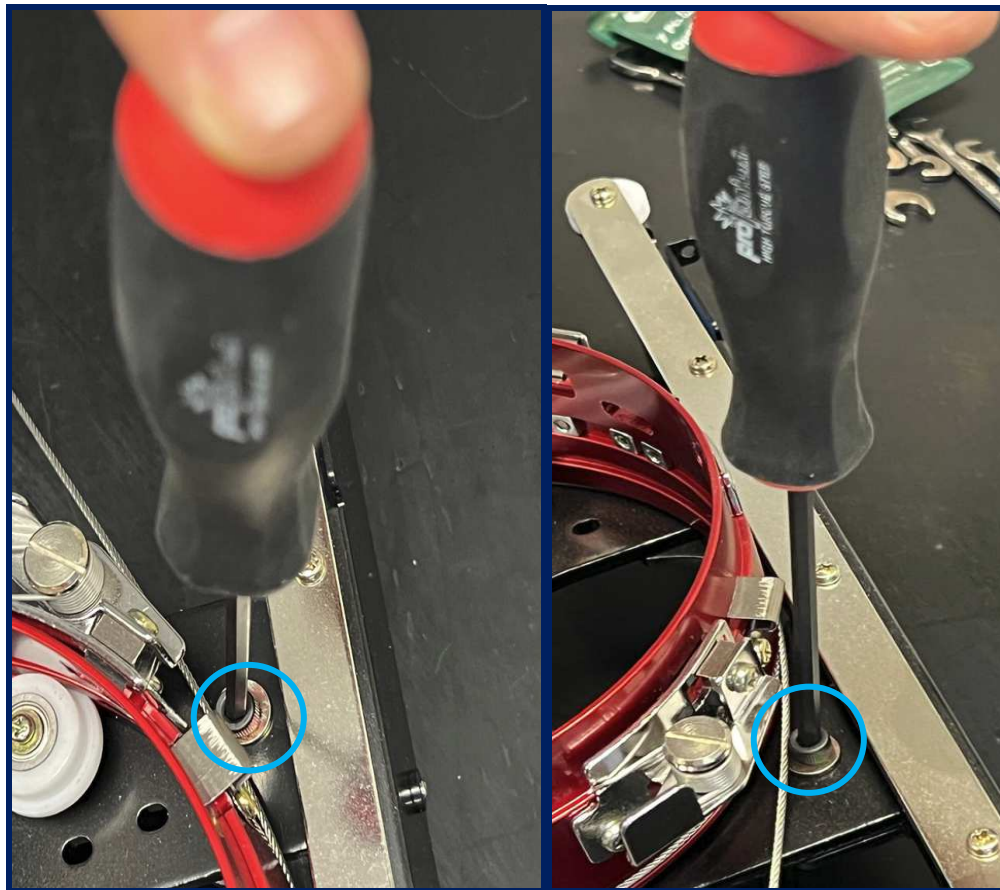


Originator:	A. Mishra	Part Number:	36056 Rev A
Approved By:	E. Larsen, D. Sweeney, N. Moore	Revision Date:	01/07/2025

3. Using a pair of pliers and a 6mm wrench, remove the Cable Tensioning Nuts on the right and left side of the Bearing Plate.



4. Using the 4mm hex drive ball-end screwdriver from the machine's Operator Kit, remove the two M5 socket head cap screws and flat washers on the right and left side of the Mounting Plate, set them aside for re-use.

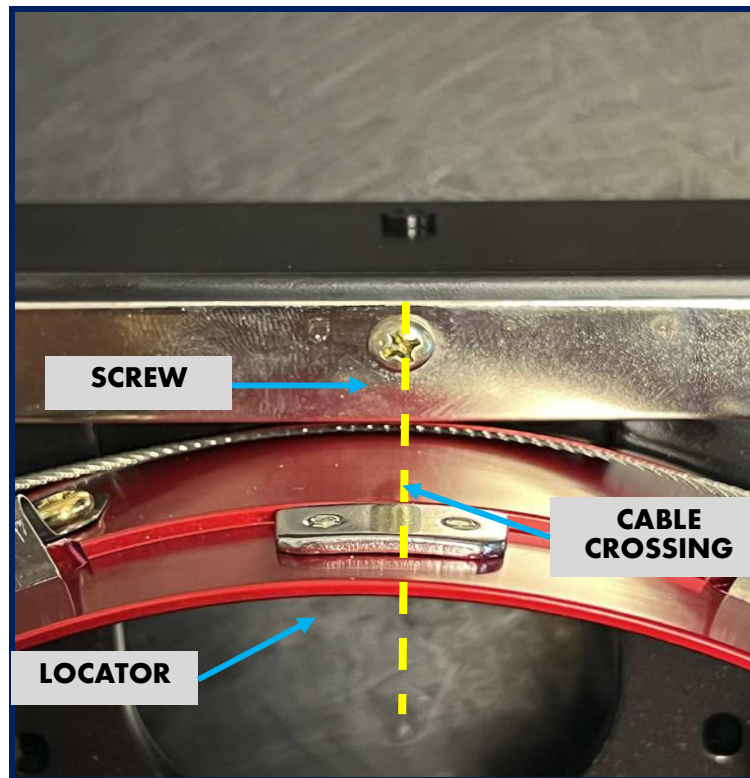


Originator:	A. Mishra	Part Number:	36056 Rev A
Approved By:	E. Larsen, D. Sweeney, N. Moore	Revision Date:	01/07/2025

5. Remove the current Bearing Mounting Bracket and make sure the cable crossing is positioned as shown below.



6. Position the new Bearing Mounting Bracket provided in the Upgrade Kit so that the cable crossing, Locator and center screw are all aligned as shown below. Make sure the Cable is in the groove on the red Cylinder.

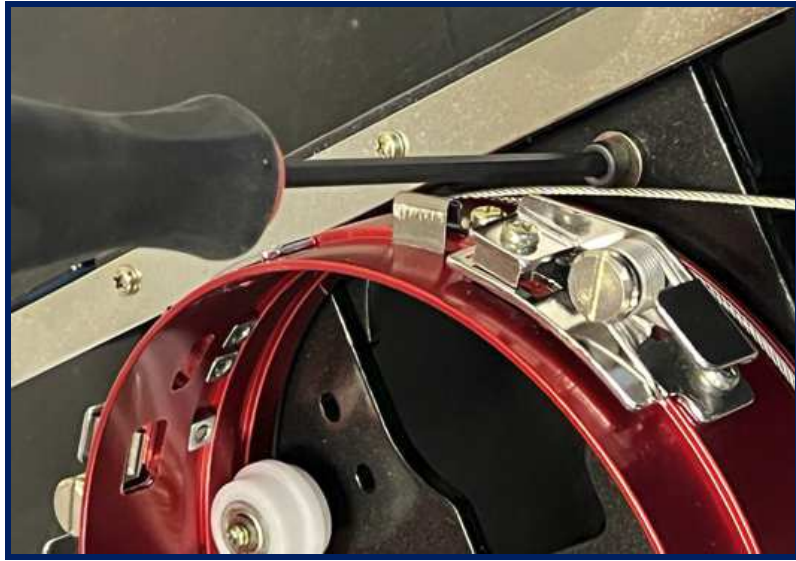


Originator:	A. Mishra	Part Number:	36056 Rev A
Approved By:	E. Larsen, D. Sweeney, N. Moore	Revision Date:	01/07/2025



<b>melco</b>	<b>INSTALLATION INSTRUCTIONS</b>	<b>MODELS</b>
	<b>LINEAR GUIDE UPGRADE FOR WIDE-ANGLE DRIVER</b>	<b>EMT16, SUMMIT, BRAVO, E16</b>

7. Using the two M5 socket head cap screws, and the Flat Washers set aside in Step 4, secure the position as shown in Step 6 by hand-tightening each screw and then loosening them by ¼ of a turn each.



8. Route the Cable around the white Guides Wheels on the right and left side of the Bearing Plate. Install the Cable Studs into the black tabs on the Bearing Mounting Bracket as shown below and attach the Cable Tensioning Nuts.



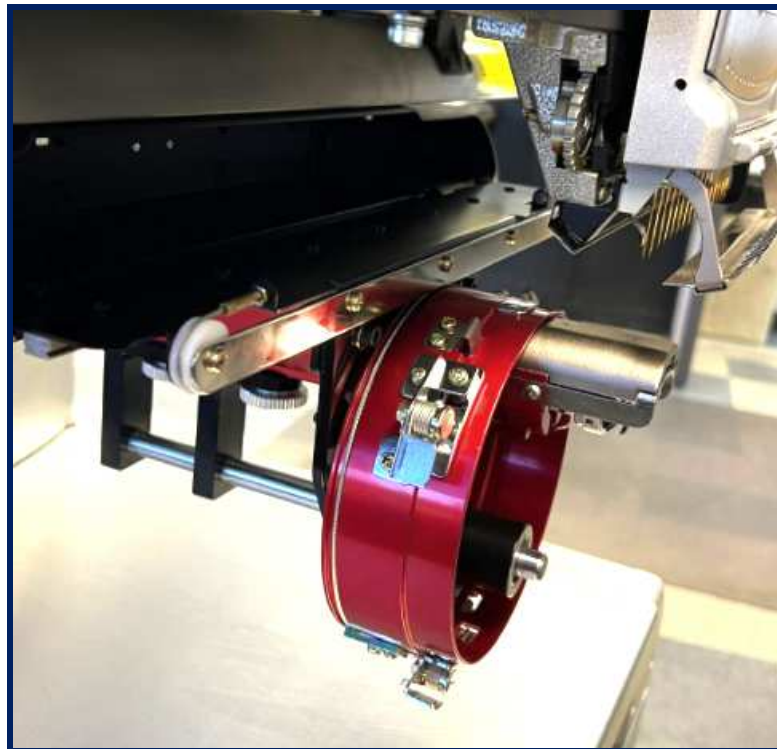
Originator:	A. Mishra	Part Number:	36056 Rev A
Approved By:	E. Larsen, D. Sweeney, N. Moore	Revision Date:	01/07/2025

<b>melco</b>	<b>INSTALLATION INSTRUCTIONS</b>	<b>MODELS</b>
	<b>LINEAR GUIDE UPGRADE FOR WIDE-ANGLE DRIVER</b>	<b>EMT16, SUMMIT, BRAVO, E16</b>

9. Ensure that the Lock Nuts are positioned as they were in Step 1 (as indicated by black marks on the threaded portion of the Studs). Tighten the Cable Tensioning Nuts until fully tightened.



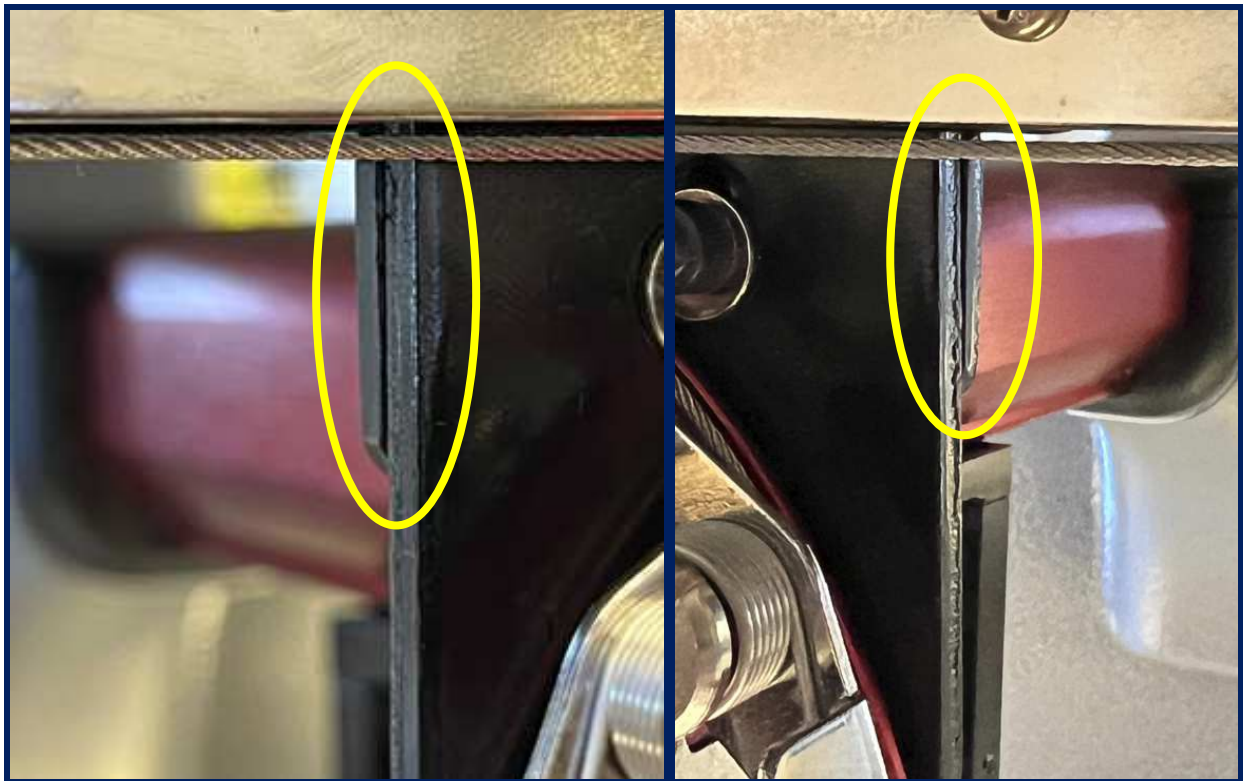
10. Install the Cap Driver Mount Assembly onto the machine, then install the upgraded Wide-Angle Driver and fasten it to the X-Carriage with two Thumb Screws.



Originator:	A. Mishra	Part Number:	36056 Rev A
Approved By:	E. Larsen, D. Sweeney, N. Moore	Revision Date:	01/07/2025

<b>melco</b>	<b>INSTALLATION INSTRUCTIONS</b>	<b>MODELS</b>
	<b>LINEAR GUIDE UPGRADE FOR WIDE-ANGLE DRIVER</b>	<b>EMT16, SUMMIT, BRAVO, E16</b>

11. Using the provided 4mm hex drive ball-end screwdriver from the machine's Operator Kit, tighten the two M5 socket head cap screws on the right and left of the Mounting Plate. Make sure the sides of the two brackets are aligned left to right. There should be no step between the two brackets. Remove the tape that was used in Step 2 to secure the Cable.



12. **Important:** Perform the Cap Driver Height Adjustment by following the instructions at:

<https://melco.zendesk.com/hc/en-us/articles/204740329-Red-WACF-Cap-Driver-Height-Adjustment>

Originator:	A. Mishra	Part Number:	36056 Rev A
Approved By:	E. Larsen, D. Sweeney, N. Moore	Revision Date:	01/07/2025